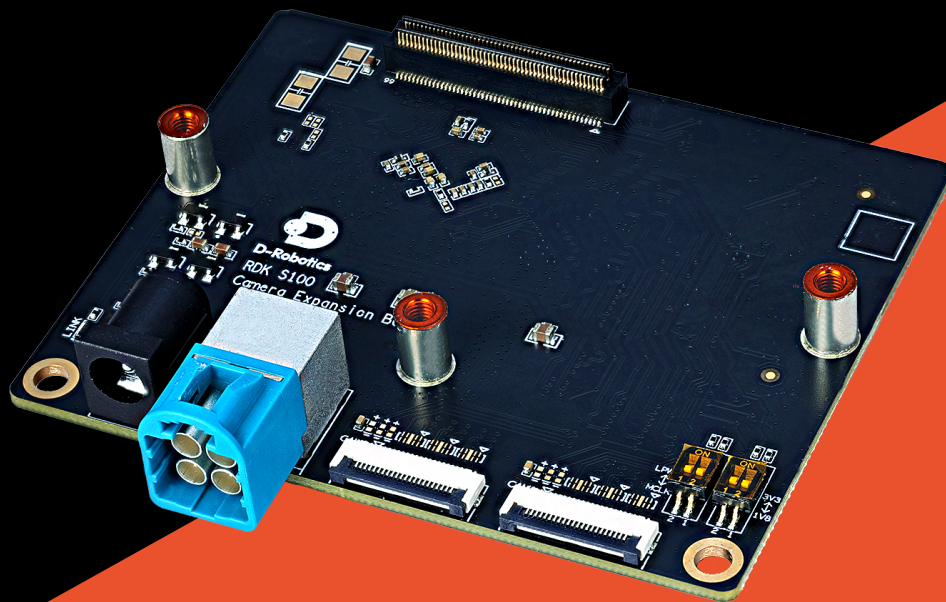


D-Robotics

RDK S100

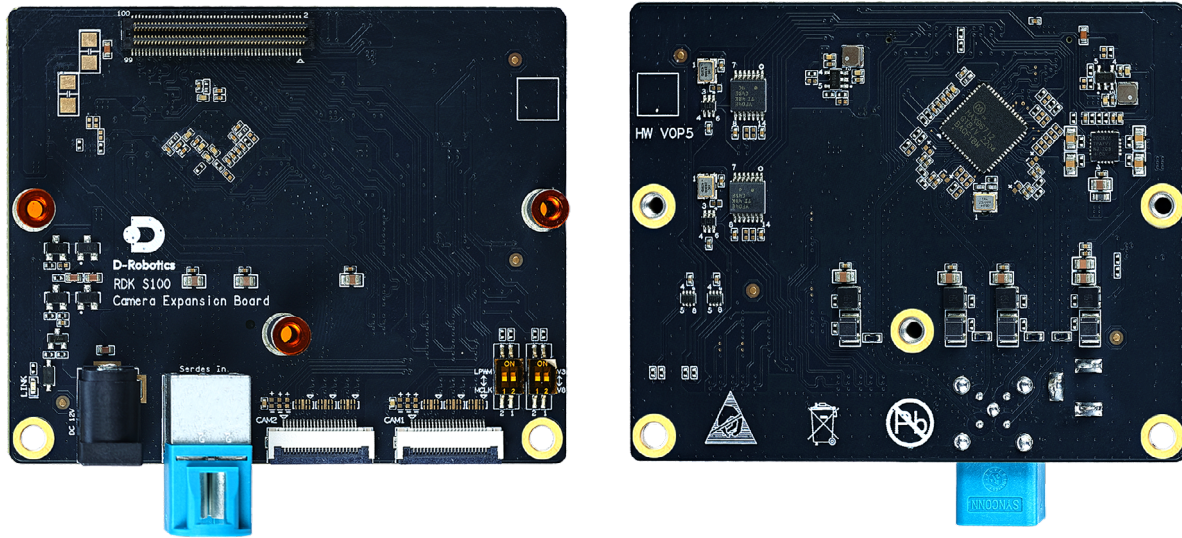
Camera Expansion Board



V1.1
2025-10

D-ROBOTICS HOLDING LIMITED

D-Robotics RDK S100 Camera Expansion Board



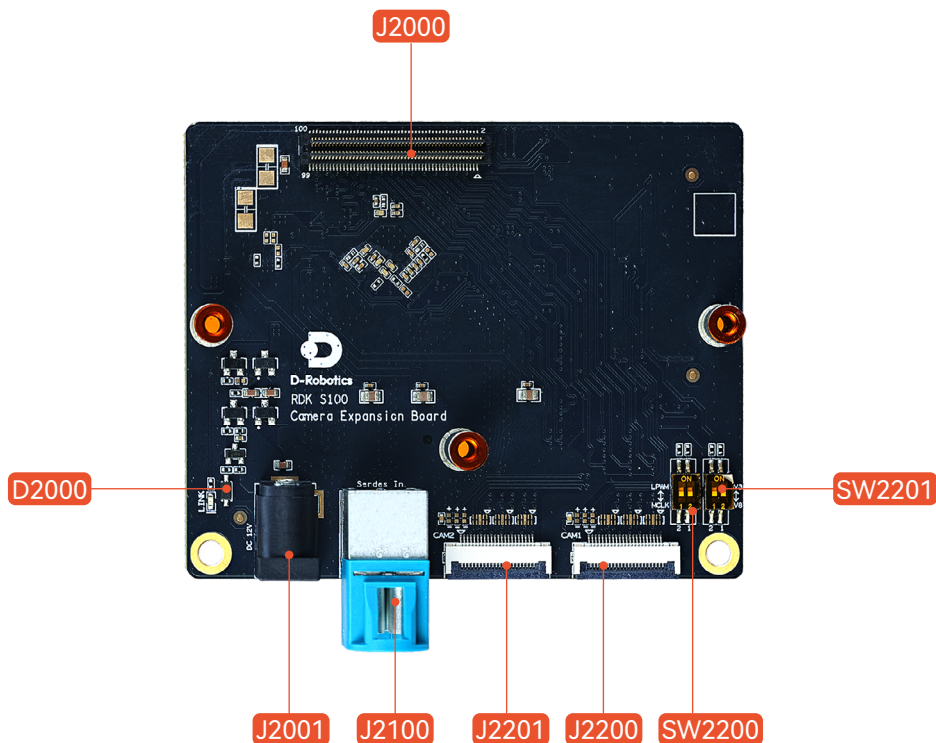
OVERVIEW

The D-Robotics RDK S100 Camera Expansion Board is an accessory designed for the RDK S100 Series Developer Kit. It converts the kit's camera expansion connector into MIPI and GMSL interfaces, enabling developers to easily connect MIPI or GMSL cameras for functional verification and secondary development.

SPECIFICATIONS

Deserializer	Maxim MAX96712
MIPI Connector	2 × 22-Pin MIPI CSI-2
GMSL Connector	Fakra-Mini 4-in-1
External Power Supply	12V DC (only required when current exceeds 700mA; maximum 2.4A)
Operating Temperature	0°C ~45°C

SPECIFICATIONS



Interface	Function	Interface	Function
J2000	100-Pin connector	J2200	MIPI Camera Interface 1
D2000	Power indicator LED	J2201	MIPI Camera Interface 2
J2001	DC power input	SW2200	MIPI camera function selection switch
J2100	GMSL camera interface	SW2201	MIPI camera voltage level selection switch

Specification & Model

Product Name	Product Model	MIPI Interface	GMSL/GMSL2	Deserializer
RDK S100 Camera Expansion Board	ES1XC1Y	2× 22-Pin MIPI CSI-2	Mini Fakra 4-in-1	MAX96712

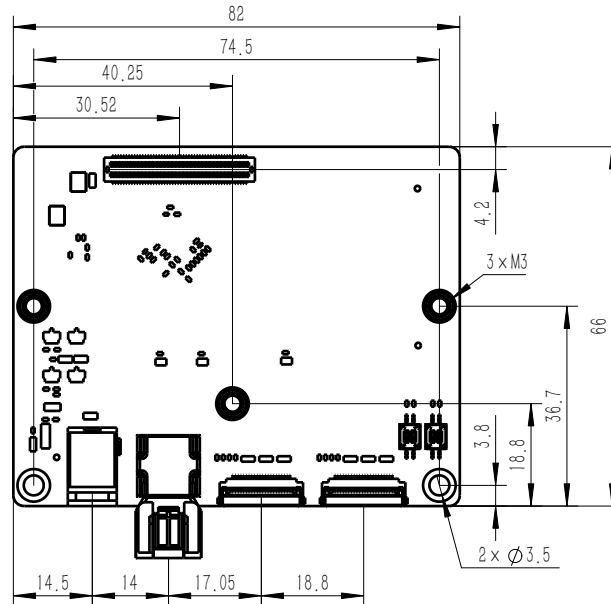
Contents List

RDK S100 Camera Expansion Board	Accessory kit
---------------------------------	---------------

For detailed specifications, please visit : <https://developer.d-robotics.cc/en>

SPECIFICATIONS

Dimension



WARNINGS

To avoid malfunction or damage, please observe the following precautions:

- When using an external power supply, please ensure it complies with the regulations and standards of the relevant region.
- This product should be used in a well-ventilated environment. If used in an enclosed space, proper heat dissipation measures must be taken.
- During use, place this product on a stable, flat, and non-conductive surface.
- Connecting incompatible devices to this product may cause damage, and such damage will not be covered by warranty or repair service.
- All peripheral devices used with this product must comply with the applicable national standards and clearly ensure that they meet relevant safety and performance requirements.
- All cables and connectors used with this product must have adequate insulation to meet the necessary safety standards.

SAFETY INSTRUCTIONS

To prevent malfunction or damage, observe the following precautions:

- Do not expose the product to water, moisture, or conductive surfaces while operating.
- Keep away from heat sources and ensure ambient temperature is within normal range.
- Avoid mechanical or electrical stress on the PCB and connectors during assembly.
- Do not touch the PCB or edges while powered to reduce the risk of electrostatic discharge (ESD).



<https://developer.d-robotics.cc>