

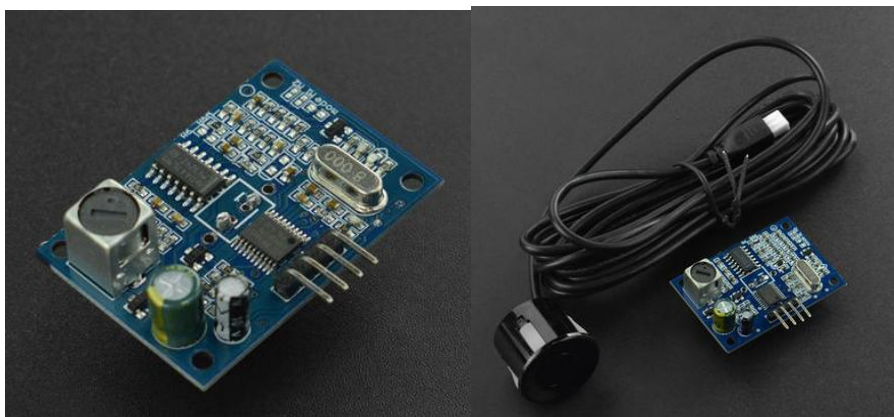
Product Change Notice

Dear customer,

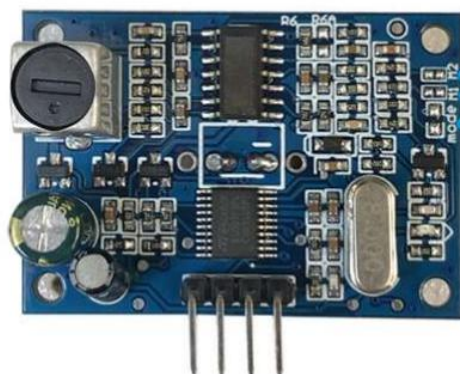
The Product **SEN0208** from Zhiwei Robotics Corp is updated and changed as follows.

1. Updated the pad working mode. Please refer to the working mode diagram below for details.
2. The measuring distance has been changed from 21cm-600cm to 30cm-500cm.
3. The PCB appearance and component layout have changed slightly.
4. Added temperature distance compensation to make the distance measurement more accurate.

Old version



Six Operating Modes



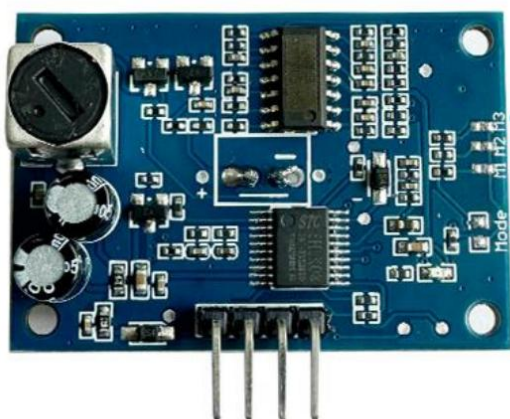
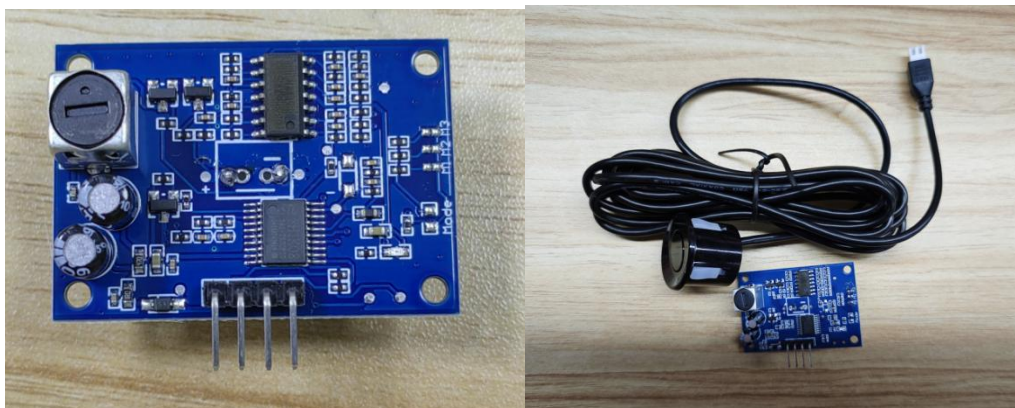
- Mode 2: M2 short connection is serial port controlled output.
- Mode 1: M1 short connection is automatic serial output.
- Mode 0: Mode floating = trigger pulse width output (factory default mode)
- Mode 3: Mode welding 200K = automatic distance pulse width output
- Mode 4: Mode welding 360K = low power pulse width mode output
- Mode 5: Mode welding 470K = switch mode output



DFROBOT
DRIVE THE FUTURE

Phone: +86-21-61620183
Email: Distributor@DFRobot.com
Add.: Rm.602-603, No.2 Boyun Rd, Pudong, Shanghai, China 201203

New Version



Mode 3: M3 short circuit for switch output

Mode 2: M2 short circuit for serial port controlled output

Mode 1: M1 short circuit for automatic serial port output

Mode 0: Mode is left floating = trigger pulse width output (factory default mode)

Mode welding 47K = Mode 1

Mode welding 120K = Mode 2

Mode welding 470K = Mode 3

If you have any questions, please consult our company or your local sales.

Company : **ZHIWEI ROBOTICS CORP.**

Date: 2025.6.3

Zhiwei Robotics Corp.

www.DFRobot.com

[DFRobot is the Internet trading division of "Zhiwei Robotics Corp."]